

The image shows a musical score for a hymn. It consists of two staves: a treble clef staff on top and a bass clef staff on the bottom. The key signature is one flat (B-flat) and the time signature is 4/4. The melody is written in the treble clef, and the accompaniment is in the bass clef. The lyrics are written below the treble clef staff.

Je - sus, your Spir - it in us is a well - spring of life ev - er - last - ing.

TEXT: Psalm 63:1-4, 7-8; John 7:37-39; Taizé Community
MUSIC: Taizé Community
Copyright © 2003, 2011 Les Presses de Taizé. Used with permission.

Noth-ing can trou-ble; noth-ing can fright-en. Those who seek God shall nev-er go want-ing.
Na - da te tur-be, na - da te es-pan - te. Quien a Dios tie - ne na-da le fal - ta.

Noth-ing can trou - ble; noth-ing can fright - en. God a - lone fills us.
Na - da te tur - be, na - da te es - pan - te. So - lo Dios bas - ta.

TEXT: Attr. Teresa of Avila, 16th cent.;para. Taizé Community, Spanish 1986, English 1995

MUSIC: Jacques Berthier, 1986

Copyright © 1991 Les Presses de Taizé.Used with permission.

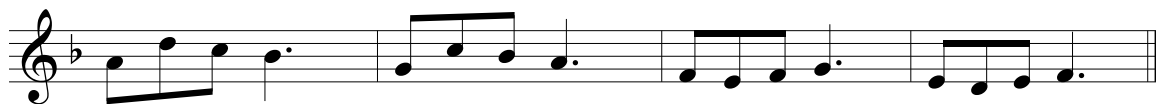
Ho - ly Spir - it, come to us; kin - dle in us the fire of your love.

Ho - ly Spir - it, come to us. Ho - ly Spir - it, come to us.

TEXT: Taizé Community, 1998; MUSIC: Jacques Berthier, 1998
 Copyright © 1998 Les Presses de Taizé. Used with permission.



Glo - ry to God, glo - ry to God, glo - ry in — the high - est!



Glo - ry to God, glo - ry to God, al - le - lu - ia, al - le - lu - ia!

TEXT: Traditional liturgical text; MUSIC: Jacques Berthier, 1979
Copyright © 1979, 1981 Les Presses de Taizé. Used with permission.